

## MEETING PACKAGE

The Charterhouse is please to offer our special corporate meeting package includes the followings:

### 8 hours usage of Function Room

#### Meal Arrangement:

- Morning Coffee Break  
(Coffee/Tea with Danish Pastries)
- Afternoon Coffee Break  
(Coffee/Tea with French Pastries)
- Lunch at Restaurant

#### Meeting Equipment:

- Overhead/Slide projector with screen
- VHS Video and TV set
- DVD Player
- Standing/Wireless microphone
- Whiteboard/Flip chart with markers
- Stationery

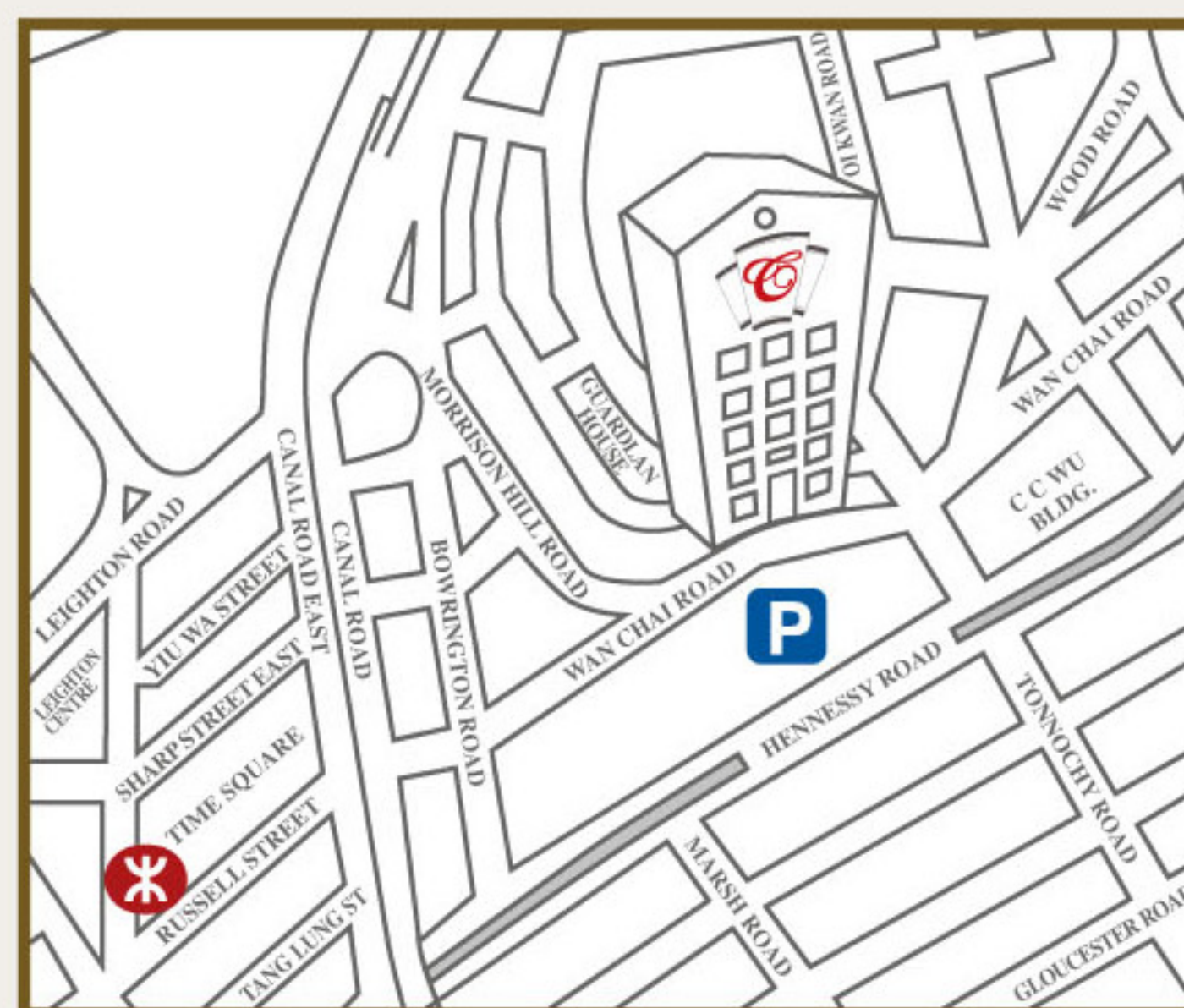
#### Minimum Attendance:

- Boardroom (Basement 2) 8 persons
- Unicorn & Phoenix (Basement 2) 15 persons

Should you have any enquiries, please do not hesitate To contact our Food and Beverage Sales Department At 2892 3350.

Wanchai and Causeway Bay

Your Best Choice!



THE CHARTERHOUSE  
利景酒店

209-219 Wanchai Road, Hong Kong

Tel: (852) 2833 5566 Fax: (852) 2892 3303

Web Page: [www.charterhouse.com](http://www.charterhouse.com) E-mail: [hd@charterhouse.com](mailto:hd@charterhouse.com)

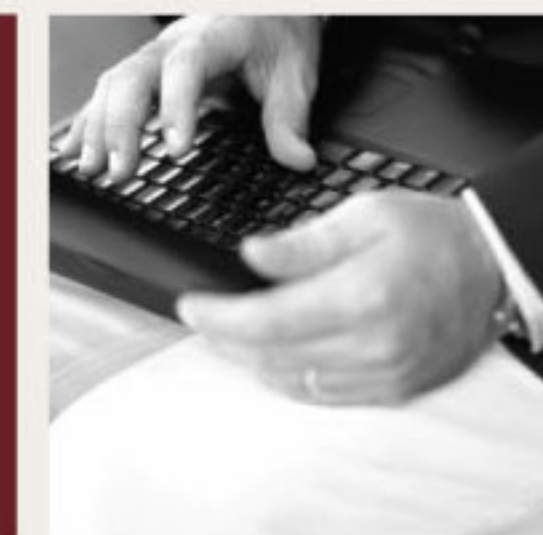
## THE CHARTERHOUSE

Event



Meeting

Exhibition



Facility



Conference

*Banqueting*

&

*Meeting Facilities*



## Banquet Equipments

### Audio

#### Microphones

Clip Microphone • Wireless Microphone • Microphone

#### Amplifier

Mixing Amplifier • Digital / Echo AV Amplifier • Speaker

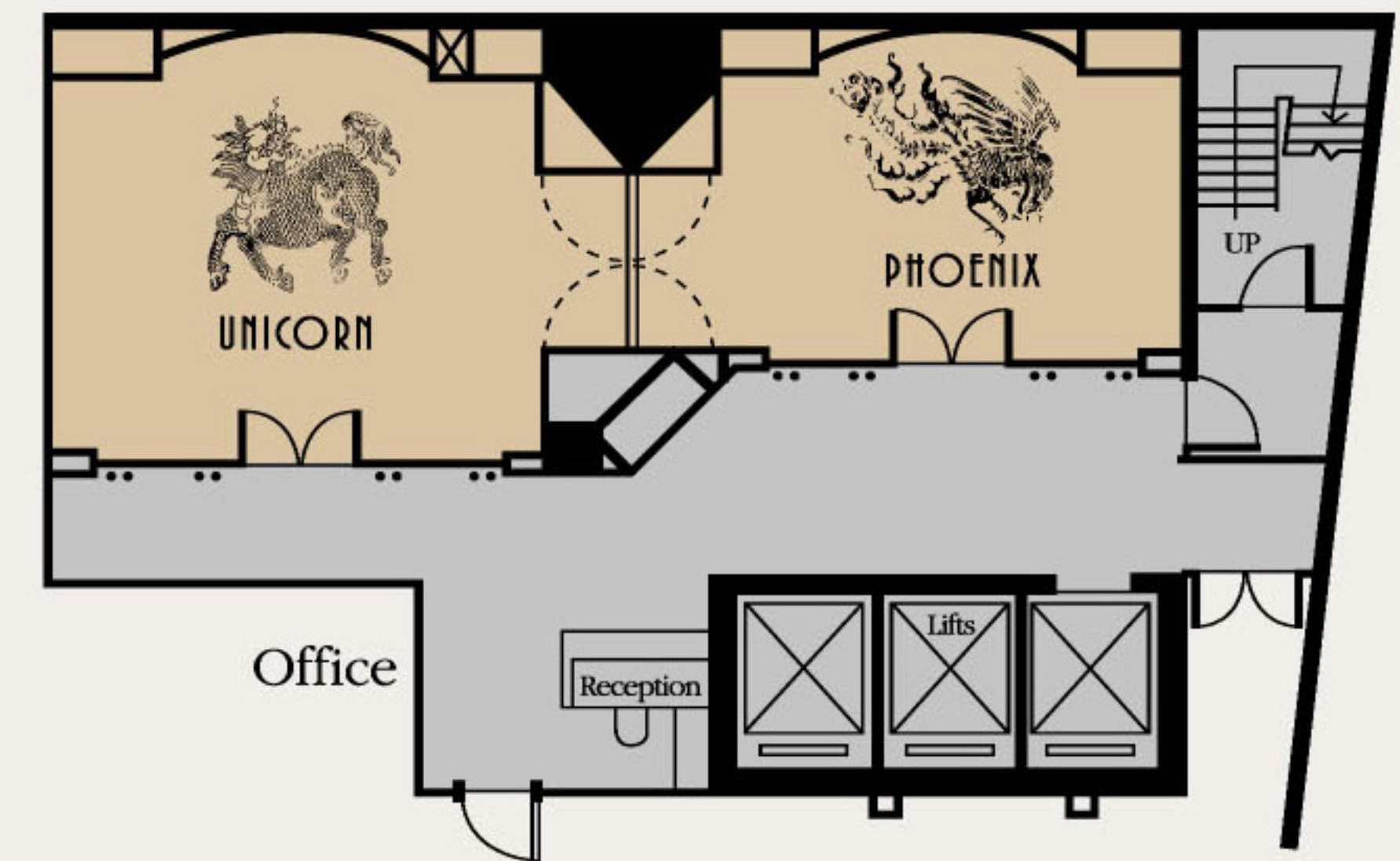
### Visual

#### Television

#### Data / Video / LCD Projector

Overhead Projector • Slide Projector (with carousel) • LCD Projector • Flip Chart • Laser Pointer • DVD Player

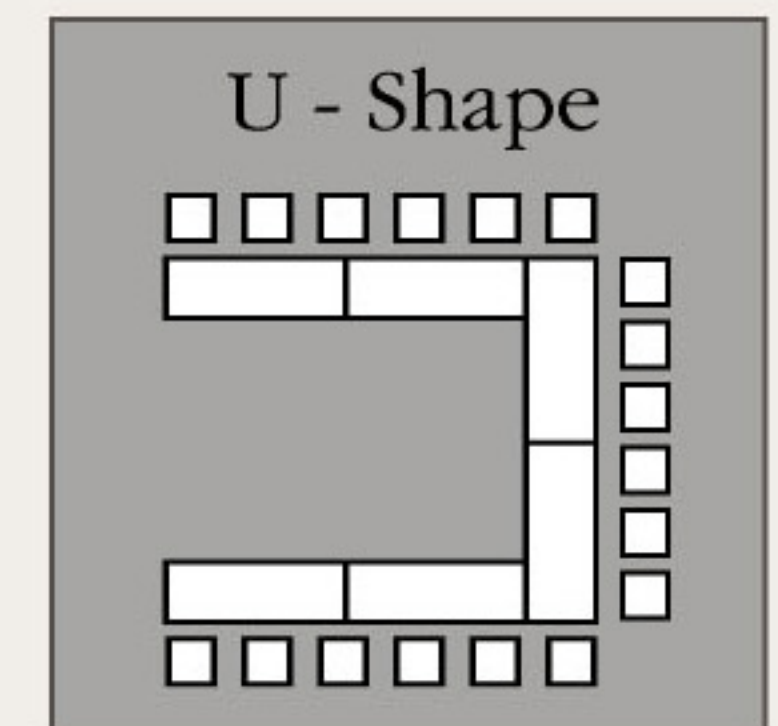
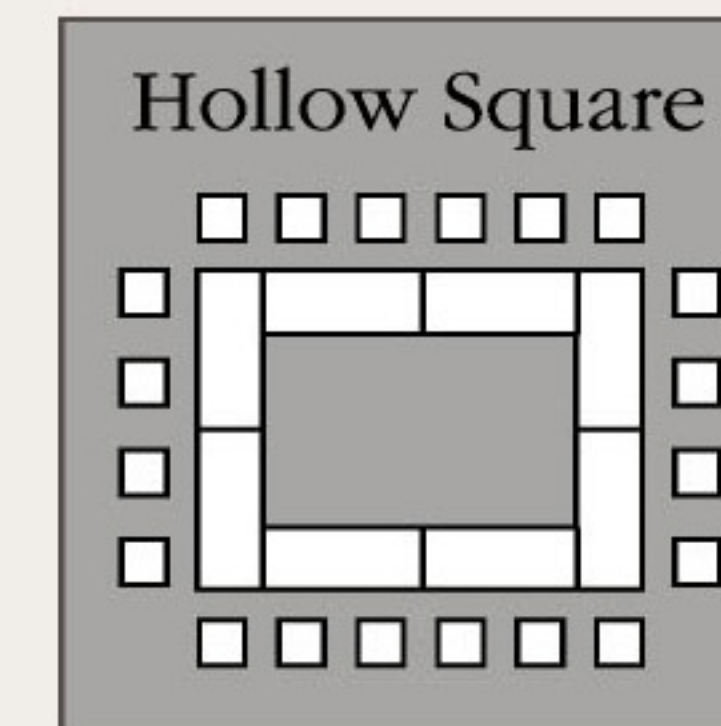
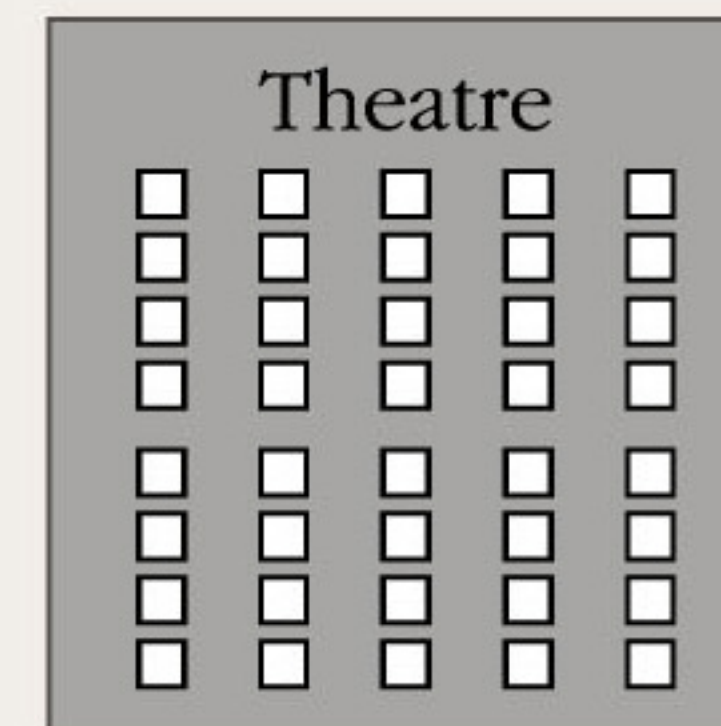
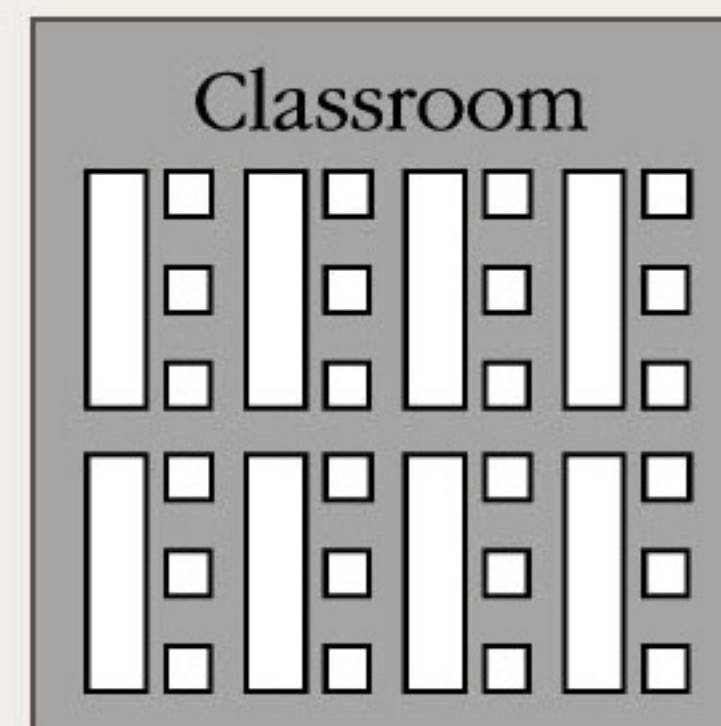
## Basement Two



Scale: 1:212

The Charterhouse is fully equipped to host all types of conferences, exhibitions and private functions. We can provide the latest audio/visual equipment to assure a successful event. Our Function rooms are well facilitated, and can accommodate up to 60 people. Professional staff are on hand to attend to all needs and arrangements.

## Arrangement Plans for Unicorn



## Function Room Capacities

Name	Dimensions			Capacity			
	L x W (m)	Head Room (m)	Area (m <sup>2</sup> )	Banquet	Cocktail	Class	Theatre
Basement II							
Phoenix	6.0 x 4.0	2.40	24	12	20	20	24
Unicorn	6.0 x 5.0	2.40	30	24	30	30	30
Phoenix + Unicorn			70	36	50	50	54